

VISION MEASURING SYSTEM CODE ISD-A100**

**INSPECTION
CERTIFICATE**


- Measures small workpiece (less than 15mm) easily and accurately



software CD (included)



step-zoom lens 0.75X-5X (zoom)



X-Y stage (included)



calibration block (included)



computer is not included

SPECIFICATION

Objective	0.75X~5X (zoom)	
Auxiliary objective	1X (included)	0.5X (included)
Focus distance	82mm	175mm
View field (diagonal length)	1.15mm~7.5mm	2.3mm~15mm
Magnification (19" widescreen display)	44X~280X	22X~140X
Camera	CMOS (color)	
Resolution (pixel)	1280×1024 (1.3M)	
Output	USB2.0	
Accuracy	4μm	
Repeatability	2μm	
Illumination	surface: adjustable ring LED contour: adjustable LED	
Dimension (L×W×H)	300×350×450mm	
Weight	2.8kg	

STANDARD DELIVERY

Main unit	1pc
Software disc	1pc
X-Y stage (travel: 74×60mm)	1pc
Calibration block	1pc
0.5X auxiliary objective	1pc
1X auxiliary objective	1pc
Ø95mm glass plate	1pc
Ø95mm white/black plate	1pc
Anti-dust cover	1pc

** Add "-P" on code No. when power supply is 220V, 50/60Hz
Add "-U" on code No. when power supply is 110V, 50/60Hz

SOFTWARE

- Operation system: Windows 7/8/10
- Language: English, Chinese
- Output to CAD, EXCEL and WORD
- Input CAD, to compare with workpieces

- coordinate transform

Focus indicator:



fast and accurately find the focus distance, eliminate the visual error

Single measuring tools:



measure coordinate of point



measure center coordinate, radius, diameter and area of circle



measure length of line



measure length and diameter of arc

Combined measuring tools:



find midpoint of a line



measure angle between two lines



measure distance from point to line



measure distance from circle to line



measure distance between two lines



measure distance between two circles



find tangent lines between two circles



measure distance between two points



find angular bisector between two lines



find tangent lines between point and circle



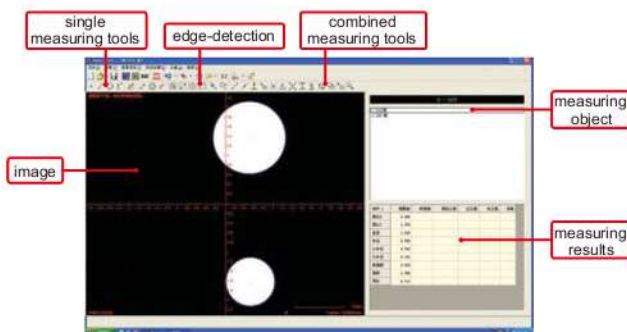
find intersection points between two circles



measure intersection point between two lines



find intersection points between circle and line

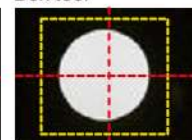


Edge-detection:

Point tool



Box tool



Circle tool



SPECIFICATION

Code	ISD-V150	ISD-V250	ISD-V300
Measuring range (X×Y×Z)	150×100×200mm	250×150×200mm	300×200×200mm
Stage size	354×228mm	450×280mm	500×330mm
Stage glass size	210×160mm	306×196mm	350×250mm
Resolution of X/Y/Z axis	0.5μm		
Accuracy of X/Y axis	$\leq(2.5+L/100)\mu\text{m}$ (L is the measuring length in mm)		
Repeatability of X/Y axis	2μm		
Objective	0.7X~4.5X (zoom)		
Working distance	92mm		
Magnification	33X~195X (on 19" monitor)		
Camera	1/3" color CCD, 1.5M pixel		
Illumination	surface and contour with adjustable LED		
Max. height of workpiece	160mm		
Max. weight of workpiece	20kg		
Operation system	Windows 7		
Drive method	manual		
Power supply	110/220V, 50/60Hz		
Dimension (L×W×H)	560×540×850mm	760×600×900mm	760×600×900mm
Weight	100kg	120kg	140kg

STANDARD DELIVERY

Main unit	1pc
Video card with dongle	1pc
Software disc	1pc
Calibration glass chart	1pc
Laser positioner	1pc
Clay	1pc
Foot switch	1pc
Anti-dust cover	1pc

OPTIONAL ACCESSORY

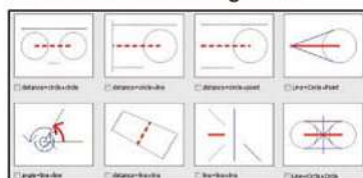
0.5X auxiliary objective	Code: ISD-V-OB05X Working distance: 175mm Magnification: 16.5~97.5X (on 19" monitor)
2X auxiliary objective	Code: ISD-V-OB2X Working distance: 36mm Magnification: 66~390X (on 19" monitor)
Probe	Code: ISD-V-PROBE Includes Ø2mm and Ø3mm styli, Ø25mm calibration ball
Lens with coaxial light	Code: ISD-V-LENS (must be installed in factory)
Vision measuring system with computer	Code: ISD-V150A, ISD-V250A, ISD-V300A

SOFTWARE

- Operation system: Windows 7
- Language: English
- Single measuring tools:

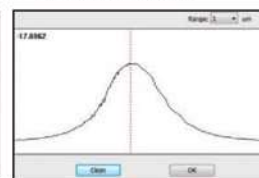
measure coordinate of point	measure center coordinate, diameter and area of circle	measure distance between two points	measure length and diameter of arc	measure angle of two lines
measure distance of two elements	measure length, width and diameter of key slot	measure width and diameter of ring	measure length of open curve	measure length and area of close curve
measure focus distance of surface	measure length, width and area of rectangle	measure center coordinate and axis length of ellipse		

Combined measuring tools:

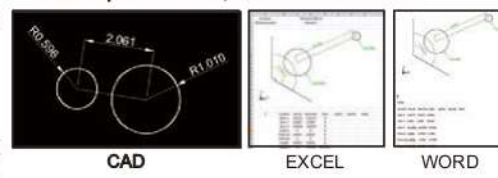


measure distance and angle of two elements

Focus indicator:



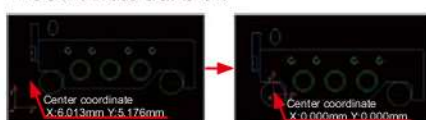
Data export to CAD, EXCEL and WORD:



Contour scanning:



Coordinate transfer:



Edge-detection:



Profile detection:

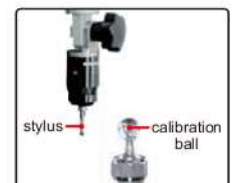
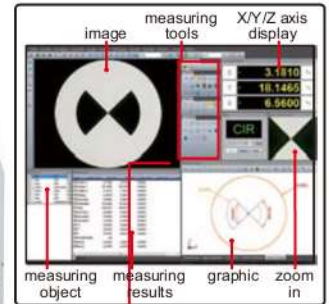


VISION MEASURING SYSTEM



ISD-V250

computer is not included



probe (optional), includes Ø2mm and Ø3mm styli, Ø25mm calibration ball, measuring accuracy is 10μm



software CD (included)



lens with coaxial light (optional, must be installed in factory)

DIGITAL MEASURING MICROSCOPE CODE ISM-DM40

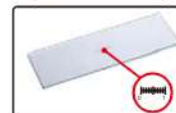
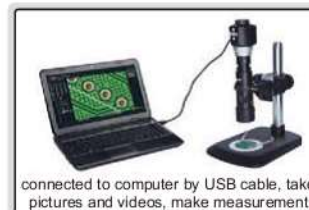
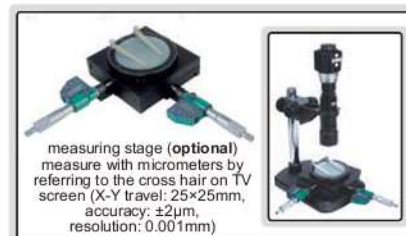
operation panel



- Connected to TV and computer
- Take pictures and videos, saved to memory card
- Measurement on computer with accuracy $\pm 0.01\text{mm}$
- Large working distance because focus distance of camera is adjustable
- Automatic white balance and exposure, white-black display mode
- Automatic power off

TAKE PICTURES
AND VIDEOSMEASUREMENT
(ON COMPUTER)FOCUS DISTANCE OF
CAMERA IS ADJUSTABLE

VIDEO

8G memory card
and holder (included)calibration rule (included,
graduation 1mm)software CD
(included)calibration rule (included,
graduation 0.1mm)connected to computer by USB cable, take
pictures and videos, make measurementmeasuring stage (optional)
measure with micrometers by
referring to the cross hair on TV
screen (X-Y travel: 25x25mm,
accuracy: $\pm 2\mu\text{m}$,
resolution: 0.001mm)

SPECIFICATION

Magnification		15X~205X (on 19" monitor)
Pixel		3.5M
Sensor		1/3" CMOS
Resolution	HDMI output	1920×1080, 1280×720, 640×480
	picture	2304×1536, 2304×1296, 1920×1080, 1280×720, 800×480
	video	1920×1080, 1280×720, 800×480
Output		USB/HDMI
Power supply		5V (>500mA)
Dimension (L×W×H)		273×205×310mm
Weight		3.5ka

connected to TV by HDMI cable, take
pictures and videos, display cross hair

STANDARD DELIVERY

Main unit	1pc
8G memory card and holder	1pc
HDMI cable (for TV)	1pc
USB cable and software (for computer)	1pc
Calibration rule (graduation 0.1mm)	1pc
Calibration rule (graduation 1mm)	1pc

LENS SCALE, MAGNIFICATION AND FOCUS DISTANCE

Lens scale	Magnification (on 19" monitor)	Focus distance (mm)
0.7X	15~40X	24~252
1X	30~50X	27~155
2X	70~80X	81~117
3X	110~120X	94~111
4X	140~160X	101~110
5X	180~205X	103~109

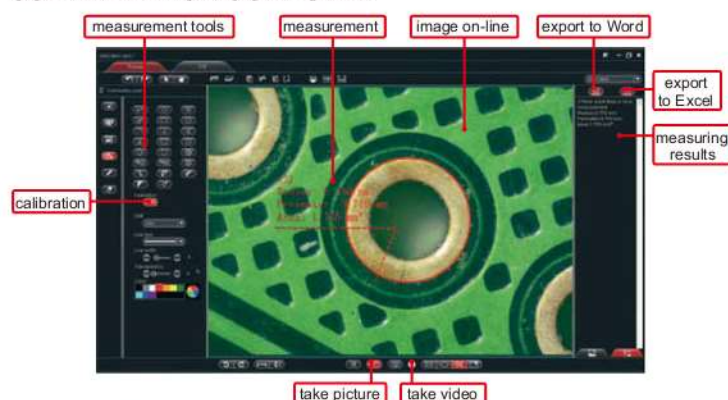
MAGNIFICATION, VIEW FIELD AND FOCUS DISTANCE

Magnification (on 19" monitor)	View field (mm)	Focus distance
15X	28x16	252mm
30X	13.5x7.5	155mm
50X	8x4.8	124mm
100X	4.2x2.4	110mm
150X	2.7x1.5	108mm
200X	2.1x1.2	105mm

OPTIONAL ACCESSORY

Measuring stage	ISM-DM40-STAGE
-----------------	----------------

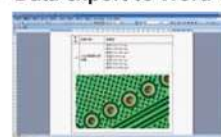
SOFTWARE FOR COMPUTER



- Language: Chinese, English, Japanese, German, French
- Operation system: Windows XP/7/8/10
- Measurement tools:

- measure length of continuous line
- measure radius, length and angle of arc
- measure angle with three points
- measure distance between two circles
- measure distance between point and line
- measure angle with two lines
- measure radius, girth and area of circle
- measure length of line or distance between two points
- measure distance between two parallel lines
- measure length, width, girth and area of rectangle
- measure center distance between parallel lines
- measure axis lengths, girth and area of ellipse
- measure circumference and area of polygon

Data export to Word or Excel:



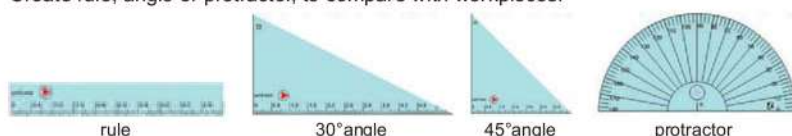
Word



Excel

Comparison tools:

Create rule, angle or protractor, to compare with workpieces.



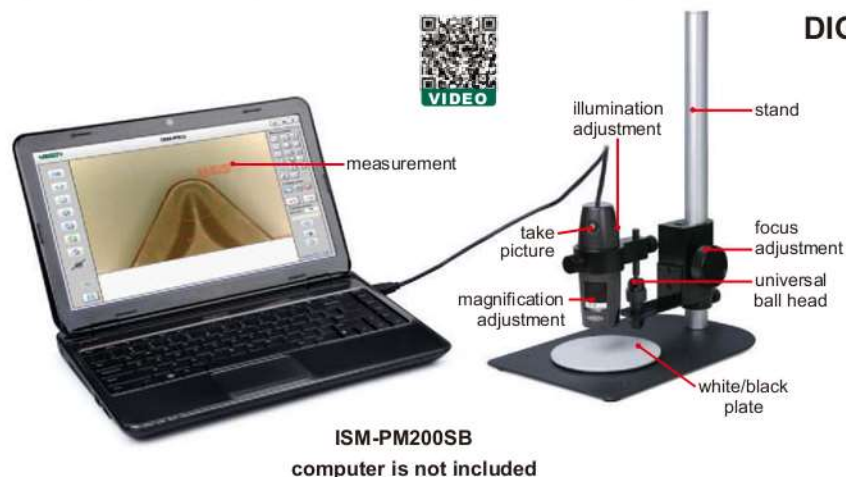
rule

30° angle

45° angle

protractor

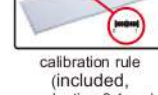
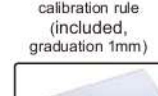
DIGITAL MEASURING MICROSCOPES



- Can take pictures and videos
- Supplied with software

SPECIFICATION

Code	ISM-PM200SB	ISM-PM600SB	ISM-PM160LA
Magnification	10X~200X	450X~600X	35X~160X
Type	short focus distance	short focus distance	long focus distance
Focus support	included	not included	not included
Calibration rule	graduation 0.1 and 1mm	graduation 0.1mm	graduation 0.1 and 1mm
Pixel	2M (resolution: 1600×1200)		
Illumination	built-in adjustable LED		
Power supply	USB 2.0 cable (voltage required: 5±0.1V)		



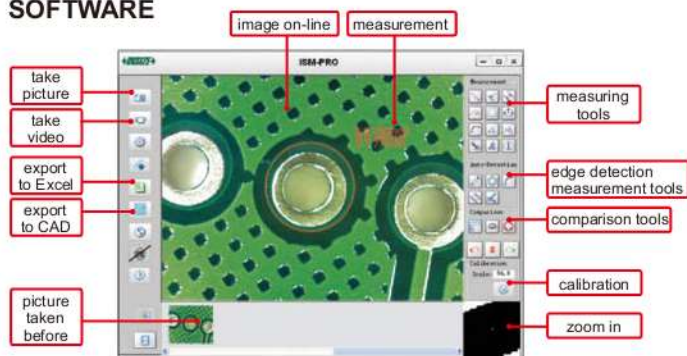
OPTIONAL ACCESSORY

Green filter	ISM-PM-GREEN
Yellow filter	ISM-PM-YELLOW
Blue filter	ISM-PM-BLUE

MAGNIFICATION, FOCUS DISTANCE, VIEW FIELD AND ACCURACY

ISM-PM200SB				ISM-PM600SB				ISM-PM160LA			
Magnification	Focus distance	View field (mm)	Accuracy	Magnification	Focus distance	View field (mm)	Accuracy	Magnification	Focus distance	View field (mm)	Accuracy
50X	21mm	8.1×6.4	30μm	450X	1.4mm	0.85×0.67	6μm	50X	62mm	8.1×6.4	30μm
100X	13mm	3.9×3.1	15μm	500X	5.5mm	0.76×0.61	6μm	100X	45mm	3.9×3.1	15μm
150X	16mm	2.6×2.1	10μm	550X	8.6mm	0.69×0.55	5μm	160X	50mm	2.4×1.9	10μm
200X	19mm	1.8×1.5	8μm	600X	11.5mm	0.63×0.51	5μm				

SOFTWARE



■ Edge detection measurement tools:

- detect two parallel lines automatically and calculate distance
- detect two lines automatically, and calculate angle
- detect circle automatically, and calculate radius, girth and area
- detect line automatically, and calculate length
- detect arc automatically, and calculate radius, angle and arc length

■ Data export to CAD or Excel:



- **Language:** English, Japanese, Korean, German, Turkey, Portuguese, Chinese

- **Operation system:** Windows 7/8/XP/Vista

■ Measuring tools:

- measure length of line or distance between two points
- measure area of rectangle
- measure radius, length and angle of arc
- measure distance between two parallel lines
- measure angle with two lines
- measure distance between two circles
- measure distance between point and line
- measure length of continuous line
- measure angle with three points
- measure radius, girth and area of circle
- add number with circle
- add text

■ Comparison tools:

- Create line, angle or circle with desired size, to compare with workpieces

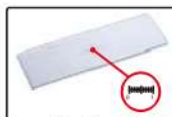
- create line
- create angle
- create circle with tolerance



WiFi DIGITAL MEASURING MICROSCOPE CODE ISM-WF200



calibration rule
(graduation 1mm, included)



calibration rule
(graduation 0.1mm, included)

- Maximum working distance is 5m under WiFi mode
- Can be connected to multiple iPads, Android devices or computers at the same time under WiFi mode
- Take pictures and videos
- Supplied with software

SPECIFICATION

Magnification	10X~200X
Pixel	1.3M (resolution: 1280×1024)
Illumination	built-in adjustable LED
Power supply	built-in rechargeable battery

STANDARD DELIVERY

Microscope	1pc
Base support	1pc
Focus support ring for 80X/150X	1pc
Focus support ring for 60X/200X	1pc
Calibration rule (graduation 0.1mm)	1pc
Calibration rule (graduation 1mm)	1pc
USB cable and software	1pc
AC/DC adapter	1pc

OPTIONAL ACCESSORY

Stand	ISM-WSTD
Green filter	ISM-PM-GREEN
Yellow filter	ISM-PM-YELLOW
Blue filter	ISM-PM-BLUE



software CD
(included)



connected to
iPad by WiFi



connected to Android
device by WiFi



connected to computer by WiFi



connected to computer by USB cable



stand (code: ISM-WSTD, optional)



filter (optional)

MAGNIFICATION, FOCUS DISTANCE, VIEW FIELD AND ACCURACY

Magnification	Focus distance	View field	Accuracy
50X	21mm	8.1×6.4mm	30μm
100X	13mm	3.9×3.1mm	15μm
150X	16mm	2.6×2.1mm	10μm
200X	19mm	1.8×1.5mm	8μm

1 Software ISM-PAD (for iPad by WiFi)

Measuring tools:



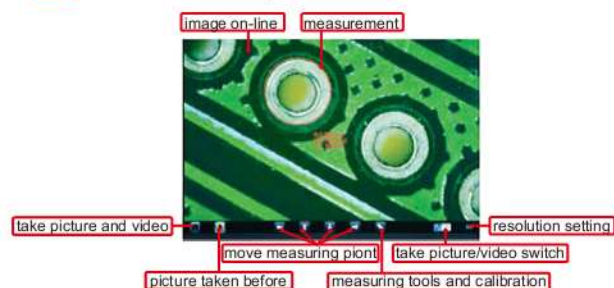
measure length of line or
distance between two points



measure angle



measure radius, girth and area
of circle with three points



2 Software ISM-APK (for Android devices by WiFi)

Measuring tools:



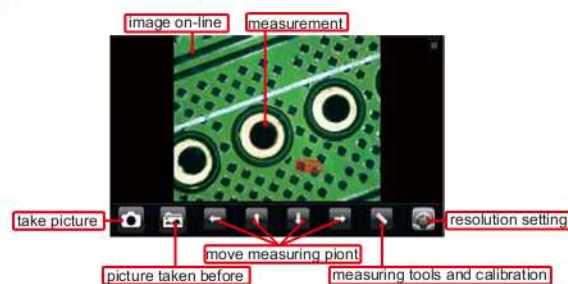
measure length of line or
distance between two points



measure angle



measure radius, girth and area
of circle with three points



3 Software ISM-WF Partner (for computer by WiFi)

Measuring tools:



measure length of line or
distance between two points



measure area of polygon



measure angle with three points



measure radius, girth and
area of circle with center point



measure length of continuous line



measure radius, girth and
area of circle with three points



measure angle with two lines



measure radius, girth and area
of circle with two points



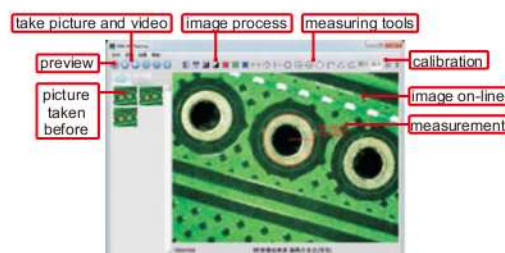
measure distance between
point and line



measure radius, length and
angle of arc



measure area of rectangle

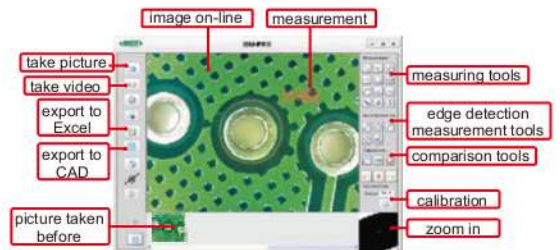


To be continued

Continued from previous page

4 Software ISM-PRO (for computer by USB cable)**■ Measuring tools:**

- | | | | |
|--|---|--|---|
| | measure length of line or distance between two points | | measure distance between point and line |
| | measure length of continuous line | | measure area of rectangle |
| | measure radius, length and angle of arc | | measure angle with three points |
| | measure distance between two circles | | add text |
| | measure distance between two parallel lines | | measure angle with two lines |
| | measure radius, girth and area of circle | | add number with circle |

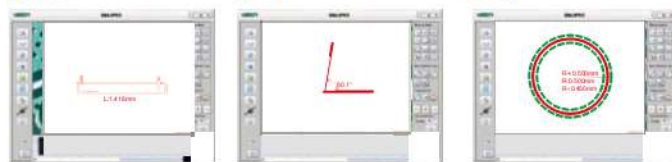
**■ Edge detection measurement tools:**

- | | | | | | |
|--|--|--|---|--|---|
| | detect line automatically, and calculate length | | detect circle automatically, and calculate radius, girth and area | | detect two lines automatically, and calculate angle |
| | detect arc automatically, and calculate radius, angle and arc length | | detect two parallel lines automatically, and calculate distance | | |

■ Comparison tools:

Create line, angle or circle with desired size, to compare with workpieces

- | | | | | | |
|--|-------------|--|--------------|--|------------------------------|
| | create line | | create angle | | create circle with tolerance |
|--|-------------|--|--------------|--|------------------------------|

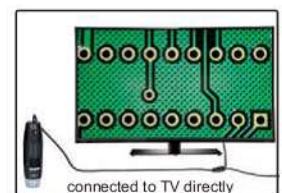
**■ Data export to CAD or Excel:****ATTENTION: NOT FOR MEASUREMENT,
NOT SUITABLE FOR COMPUTERS**stand (code: **ISM-WSTD**, optional)

- Connected to TV directly
- For observation, cannot take pictures and videos

**ISM-TV200 (with wire)****TV DIGITAL MICROSCOPES****ISM-TV200W (wireless)****SPECIFICATION**

Code	ISM-TV200	ISM-TV200W
Type	with wire	wireless (maximum transmission distance 5m)
Magnification	10X~200X (on 17" TV)	
Pixel	0.35M	
Illumination	adjustable brightness LED	
Focus	supplied with focus ring, stand (ISM-WSTD) is optional	
Power supply	DC	built-in rechargeable battery

filter (optional)



connected to TV directly

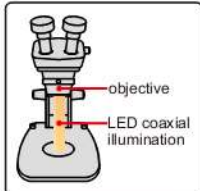
MAGNIFICATION, FOCUS DISTANCE AND VIEW FIELD

ISM-TV200			ISM-TV200W		
Magnification	Focus distance	View field	Magnification	Focus distance	View field
50X	21mm	8.1×6.4mm	60X	19mm	6.9×5.2mm
100X	13mm	3.9×3.1mm	80X	16mm	5.0×3.8mm
150X	16mm	2.6×2.1mm	150X	16mm	2.6×2.1mm
200X	19mm	1.8×1.5mm	200X	19mm	1.8×1.5mm

OPTIONAL ACCESSORY

Green filter	ISM-PM-GREEN
Yellow filter	ISM-PM-YELLOW
Blue filter	ISM-PM-BLUE

DIGITAL ZOOM MICROSCOPE CODE ISM-ZS60



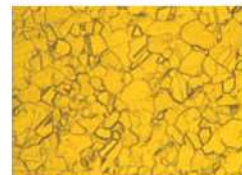
coaxial illumination



computer is not included

COAXIAL
ILLUMINATIONMEASUREMENT
(ON COMPUTER)

observe the scratches or points on smooth surfaces



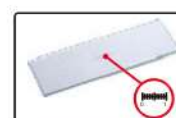
observe the metallurgical structure

SPECIFICATION

Magnification	38X~230X (on 19" monitor)
Pixel	5M
Sensor	1/2.5" CMOS
Resolution	picture 2592×1944, 1920×1080, 1600×1200, 1280×960, 1280×720, 1024×768, 800×600, 640×480
	video 1920×1080, 1600×1200, 1280×960, 1280×720, 1024×768, 800×600, 640×480
Max. workpiece height	215mm
Illumination	LED coaxial illumination
Output	USB
Power supply	5V, >500mA
Dimension (L×W×H)	290×260×480mm
Weight	5.1kg

OBJECTIVE SCALE, MAGNIFICATION, VIEW FIELD AND FOCUS DISTANCE

Objective scale	Magnification (on 19" monitor)	View field	Focus distance
0.8X	38X	7×5mm	130mm
1X	46X	5.5×4.1mm	125mm
2X	92X	2.7×2mm	118mm
3X	144X	1.8×1.3mm	116mm
4X	184X	1.3×1mm	115mm
5X	230X	1.1×0.8mm	114mm

calibration rule
(included, graduation 1mm)calibration rule
(included, graduation 0.1mm)

10X objective (included)

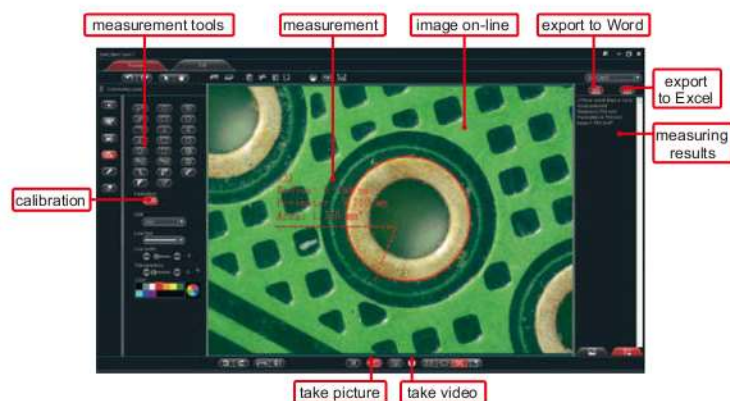


software CD (included)

STANDARD DELIVERY

Main unit	1pc
Digital camera	1pc
LED illumination	1pc
10X objective	2pcs
Calibration rule (graduation 0.1mm)	1pc
Calibration rule (graduation 1mm)	1pc
Software CD	1pc
Anti-dust cover	1pc

SOFTWARE FOR COMPUTER

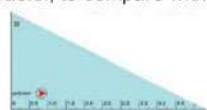


Comparison tools:

Create rule, angle or protractor, to compare with workpieces.



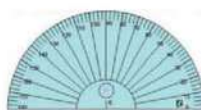
rule



30°angle



45°angle



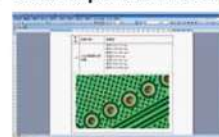
protractor

- Language: Chinese, English, Japanese, German, French
- Operation system: Windows XP/7/8/10

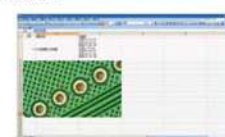
Measurement tools:

- | | |
|--|--|
| <ul style="list-style-type: none"> measure length of continuous line measure radius, length and angle of arc measure angle with three points measure distance between two circles measure distance between point and line measure angle with two lines measure radius, girth and area of circle | <ul style="list-style-type: none"> measure length of line or distance between two points measure distance between two parallel lines measure length, width, girth and area of rectangle measure center distance between parallel lines measure axis lengths, girth and area of ellipse measure circumference and area of polygon |
|--|--|

Data export to Word or Excel:



Word

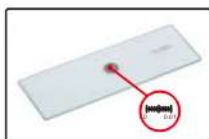


Excel

METALLURGICAL MICROSCOPE CODE ISM-M2000



adapter 0.5X
(included)



calibration rule
(included, graduation 0.01mm)

- For high magnification observation and metallurgical image analysis
- Infinite optical system, can add optical accessories like polarizer, analyzer, DIC (code ISM-M2000-DIC) into optical path without image quality influence
- Objective can be used in both bright field and dark field
- Kohler illumination system provides uniform illumination
- Three working modes: 100% eyepiece observation, 100% camera observation, both eyepiece and camera observation (80% illuminance for camera and 20% illuminance for eyepiece)



SPECIFICATION

Eyepiece (wide field)	10X (view field: Ø22mm)				
Objective (plan achromatic)	5X (included)	10X (included)	20X (included)	50X (included)	100X (included)
Numerical aperture	0.12	0.25	0.40	0.75	0.90
Working distance	10mm	10mm	5mm	1.3mm	0.7mm
Stage	double layer, size: 160×140mm, travel: 75×50mm (graduation: 0.1mm)				
Kohler illumination	12V/50W halogen lamp, brightness is adjustable with polarizer and analyzer, built-in green, yellow, blue, gray and frosted glass				
Pupil distance	48~75mm				
Diopter adjustment	±5 diopter (two eyepieces)				
Power supply	110/220V, 50/60Hz				
Dimension (L×W×H)	647×268×376mm				
Weight	12kg				

STANDARD DELIVERY

Main unit	1pc
10X dividing eyepiece (0.1mm/div.)	1pc
Calibration rule (graduation 0.01mm)	1pc
Camera adapter	1pc
Adapter 0.5X	1pc
Anti-dust cover	1pc

OPTIONAL ACCESSORY

15X eyepiece (view field: Ø16mm)	ISM-M2000-15X
20X eyepiece (view field: Ø12mm)	ISM-M2000-20X
DIC	ISM-M2000-DIC
Metallurgical image analysis software and camera	ISM-MAS100

ZOOM STEREO MICROSCOPES

SPECIFICATION

Code	ISM-ZS50	ISM-ZS50T
Optical tube	binocular	trinocular
Eyepiece (wide field)	10X (view field: Ø22mm)	
Objective	0.8X~5X (zoom)	
Zoom ratio	1:6.3	
Pupil distance	55~75mm (adjustable)	
Diopter adjustment	±5 diopter (two eyepieces)	
Working distance of objective	115mm	
Max. workpiece height	215mm	
Illumination	adjustable reflected and transmitted LED light	
Power supply	110/220V, 50/60Hz	
Dimension (L×W×H)	290×260×480mm	
Weight	4.9kg	



ISM-ZS50

STANDARD DELIVERY

Main unit	1pc
WF 10X eyepiece	2pcs
Ø100mm glass plate	1pc
Ø100mm white/black plate	1pc
Anti-dust cover	1pc

OPTIONAL ACCESSORY

Auxiliary objective	0.5X	ISM-ZS50-OB05X
	2X	ISM-ZS50-OB2X
Eyepiece	10X dividing eyepiece (0.1mm/div.)	ISM-ZS50-EPD10X
	WF15X (view field: Ø16mm)	ISM-ZS50-EP15X
	WF20X (view field: Ø12mm)	ISM-ZS50-EP20X
Digital camera		ISM-D500

ZOOM STEREO MICROSCOPE CODE ISM-ZS30

SPECIFICATION

Optical tube	binocular
Eyeiece (wide field)	10X (view field: Ø20mm)
Objective	1X~4.5X (zoom)
Zoom ratio	1:4.5
Pupil distance	55~75mm (adjustable)
Diopter adjustment	±5 diopter (two eyepieces)
Working distance of objective	97mm
Max. workpiece height	147mm
Illumination	adjustable reflected and transmitted LED light
Power supply	110/220V, 50/60Hz
Dimension (L×W×H)	260×190×400mm
Weight	4.3kg



STANDARD DELIVERY

Main unit	1pc
WF 10X eyepiece	2pcs
Ø95mm glass plate	1pc
Ø95mm white/black plate	1pc
Anti-dust cover	1pc

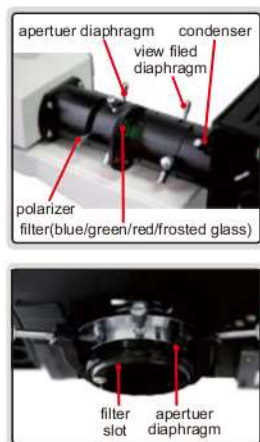
OPTIONAL ACCESSORY

Auxiliary objective	0.5X	ISM-ZS30-OB05X
	0.63X	ISM-ZS30-OB06X
	0.75X	ISM-ZS30-OB07X
	2X	ISM-ZS30-OB2X
Eyepiece	10X dividing eyepiece (0.1mm/div.)	ISM-ZS30-EPD10X
	WF15X (view field: Ø16mm)	ISM-ZS50-EP15X
	WF20X (view field: Ø12mm)	ISM-ZS50-EP20X
Digital camera		ISM-D500

HIGH MAGNIFICATION MICROSCOPE CODE ISM-M600**



- For high magnification observation
- Reflected and transmitted illumination can work at the same time
- Objectives 40X, 60X are spring type



SPECIFICATION

Eyeiece (wide field)	10X (view field: Ø18mm)				
Objective (plan achromatic)	5X	10X	20X	40X	60X
Numerical aperture	0.12	0.25	0.40	0.60	0.75
Working distance	18.4mm	8.8mm	8.6mm	3.7mm	1.34mm
Stage	double layer with sample clamp				
	size: 160×140mm				
	travel: 75×50mm (graduation: 0.1mm)				
Pupil distance	53~75mm				
Diopter adjustment	±5 diopter (one eyepiece)				
Illumination	reflected and transmitted: 6V/20W halogen lamp, brightness is adjustable				
Dimension (L×W×H)	450×300×350mm				
Weight	11kg				

** Add "-P" on code No. when power supply is 220V, 50/60Hz
Add "-U" on code No. when power supply is 110V, 50/60Hz

STANDARD DELIVERY

Main unit	1pc
Anti-dust cover	1pc
Filter (blue/green/frosted glass)	1pc of each

OPTIONAL ACCESSORY

Objective	PL80X	ISM-MTM-OB80X
	PL100X (dry type)	ISM-MTM-OB100X
10X dividing eyepiece (0.1mm/div.)		ISM-MTM-EPD10X
WF16X eyepiece		ISM-MTM-EP16X
WF20X eyepiece		ISM-MTM-EP20X
Camera adapter (1X)		ISM-M600-ADAPTER
Digital camera		ISM-D500

HIGH MAGNIFICATION MICROSCOPE CODE ISM-M1000**

- For high magnification observation
- Kohler illumination system provides uniform illumination field
- Objectives 20X, 40X, 100X are spring type

STANDARD DELIVERY

Main unit	1pc
Oil for 100X objective	1bottle
Anti-dust cover	1pc
Filter (blue/green/yellow)	1pc of each

SPECIFICATION

Eyeiece (wide field)	10X (view field: Ø18mm)			
Objective (plan achromatic)	10X	20X	40X	100X (oil type)
Numerical aperture	0.25	0.40	0.60	1.25
Working distance	8.8mm	8.6mm	3.3mm	0.33mm
Stage	double layer			
	size: 180×150mm			
	travel: 15×15mm			
Pupil distance	53~75mm			
Diopter adjustment	±5 diopter (one eyepiece)			
Illumination	6V/20W halogen lamp			
Power supply	220V, 50/60Hz **			
Dimension (L×W×H)	385×300×440mm			
Weight	11kg			

** Add "-U" on code No. when power supply is 110V, 50/60Hz



OPTIONAL ACCESSORY

Objective	PL50X	ISM-MTM-OB50X
	PL60X	ISM-MTM-OB60X
	PL80X	ISM-MTM-OB80X
	PL100X (dry type)	ISM-MTM-OB100X
10X dividing eyepiece (0.1mm/div.)		ISM-MTM-EPD10X
WF16X eyepiece		ISM-MTM-EP16X
WF20X eyepiece		ISM-MTM-EP20X
Camera adapter (1X)		ISM-M1000-ADAPTER
Digital camera		ISM-D500

DIGITAL CAMERA CODE ISM-D500



- Inserted into eyepiece tube or camera connector of microscopes
- Supplied with software



software CD
(included)



SPECIFICATION

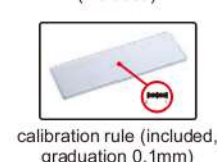
Sensor	1/2.5" CMOS
Pixel	5M
Resolution	2592×1944 or 1296×972
Frame rate	3fps (2592×1944)
	12fps (1296×972)
Exposure	manual or auto, exposure time is adjustable
SNR	41dB
Power supply	USB
Weight	400g

STANDARD DELIVERY

Main unit	1pc
Adapter 0.45X	1pc
Calibration rule (graduation 0.1mm)	1pc
Connector Ø23.2/Ø30mm	1pc
USB cable	1pc
Software disc	1pc

OPTIONAL ACCESSORY

Connector Ø23.2/Ø30.5mm	ISM-DCA-CON
-------------------------	-------------

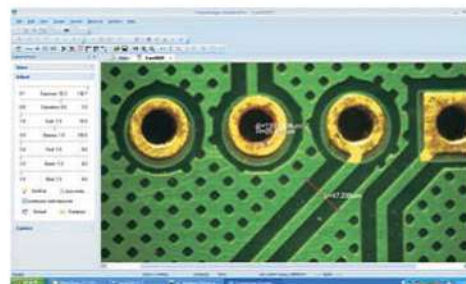


SOFTWARE FOR DIGITAL CAMERA (INCLUDED)

Measuring Tools:

- measure distance between two points
- measure angle with three points
- measure circle
- measure rectangle
- calibration

- Can take pictures and videos
- Exposure/gain/gamma/saturation/colour adjustment
- Image process feature: zoom in/out, image flip and so on



PORTABLE MEASURING MICROSCOPES



SPECIFICATION

Code	ISM-PM20	ISM-PM40	ISM-PM50	ISM-PM100
Total magnification	20X	40X	50X	100X
Eyepiece	10X with graduation	10X with graduation	10X with graduation	10X with graduation
Objective (achromatic)	2X (numerical aperture: 0.05)	4X (numerical aperture: 0.1)	5X (numerical aperture: 0.12)	10X (numerical aperture: 0.25)
Working distance	17.2mm	18mm	17.6mm	7mm
Graduation	0.05mm	0.025mm	0.02mm	0.01mm
Viewing field	Ø9mm	Ø4.5mm	Ø3.6mm	Ø1.8mm
Focus range	30mm			
Illumination	LED light			
Diameter of base	Ø63mm			
Height	210mm			
Weight	650g			

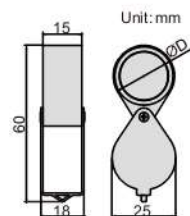
STANDARD DELIVERY

Main unit	1pc
Pen light	1pc
Battery (AAA)	2pcs

FOLDING MAGNIFIER

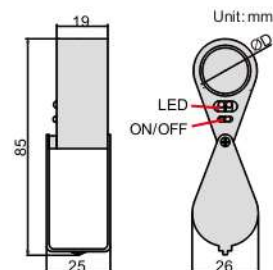
- Glass lens

Code	Magnification	Lens diameter (ØD)
7511-8	8X	Ø21mm



FOLDING MAGNIFIER WITH ILLUMINATION

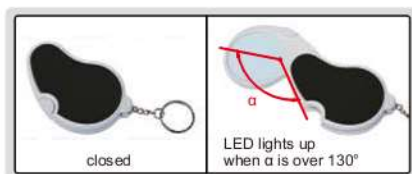
closed



Code	Magnification	Lens diameter (ØD)
7515-10	10X	Ø21mm

- Glass lens
- Powered by 3xLR927 batteries (included)

FOLDING MAGNIFIER WITH ILLUMINATION



- Plastic lens
- Powered by 2xCR1620 batteries (included)
- LED lights up automatically when α is over 130°

Code	Magnification	Lens diameter (ØD)
7514-1	2.5X	Ø45mm

